



California Faucets®

CHRISTOPHERGRUBB Collection

# Trousdale™

## Floor Mount tub Filler with Handshower

### Features

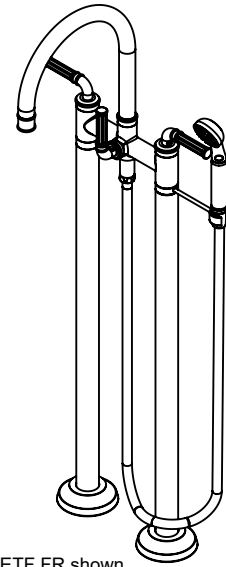
- Available in 28 finishes including 13 PVD finishes
- All brass construction
- No additional wall or trap stabilizer kit required
- Tub filler maximum flow rate: 15 gpm (56.8 L/min) at 60 psi
- Handshower flow rate: 2.0 gpm (7.6 L/min) or 1.8 gpm (6.8 L/min)
- Handshower bracket may be placed on COLD or HOT side of body
- 1/4 turn ceramic disc cartridges
- Rough kit (9516) sold separately

### Codes/Standards

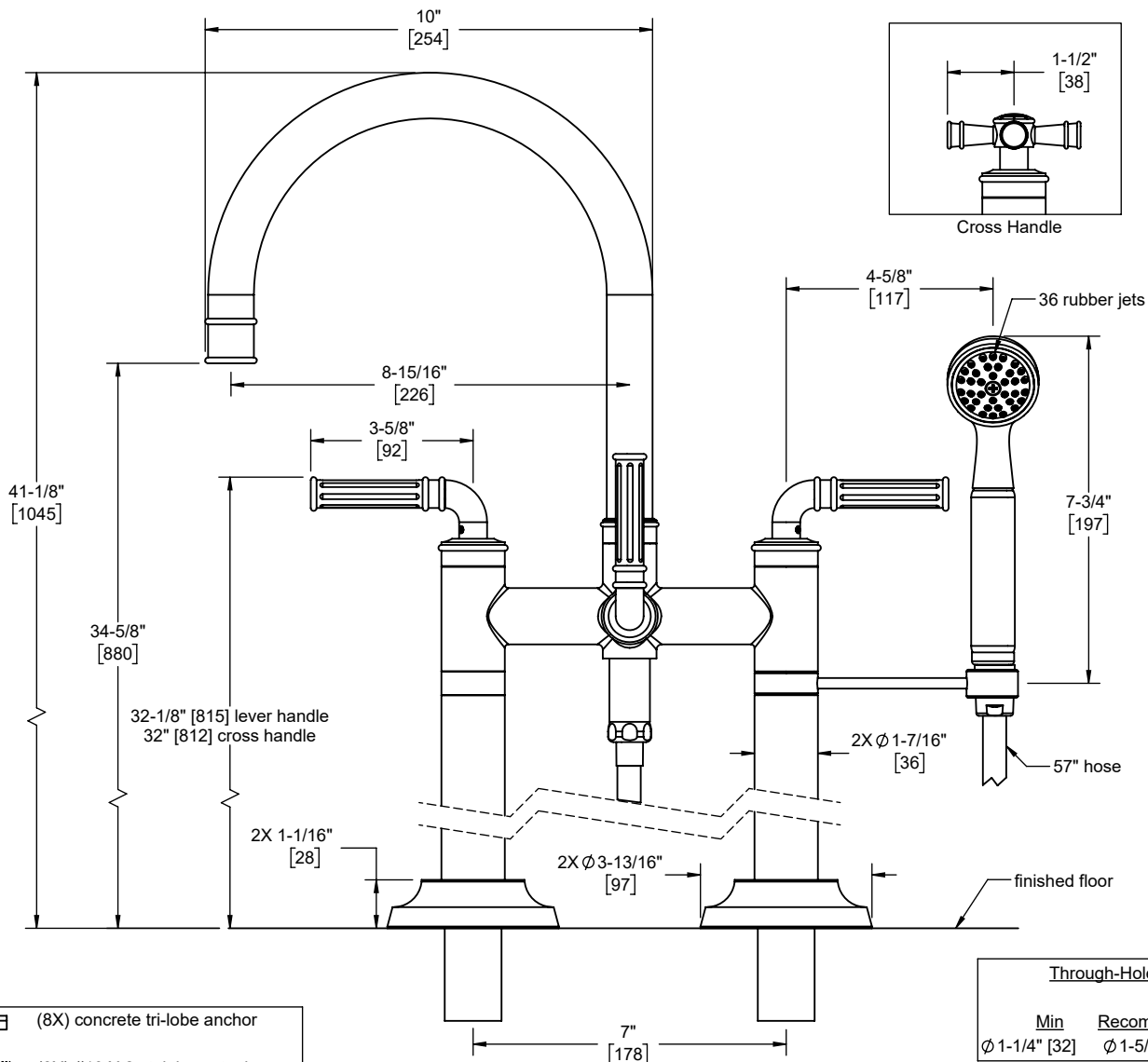
Product meets or exceeds the following:

- ASME A112.18.1/CSA B125.1
- CEC (1.8 gpm) / DOE (2.0 & 1.8 gpm)
- Commonwealth of MA
- EPA WaterSense Handshower (2.0 gpm)
- ADA compliant (lever handles only)
- Local codes may require installation of an upstream tempering valve

C108-ETF.18  
 C108-ETF.20  
 C108X-ETF.18  
 C108X-ETF.20  
 C108XS-ETF.18  
 C108XS-ETF.20



C108-ETF.FR shown



- (8X) concrete tri-lobe anchor
- (8X) #10 X 2 stainless steel screw

Specifications subject to change without notice

Through-Hole Specifications		
Min	Recommended	Max
Ø 1-1/4" [32]	Ø 1-5/16" [33]	Ø 1-1/2" [38]

Dimensions are inches, rounded to 1/16"  
[Dimensions in brackets are mm, rounded to 1mm]